



Empowering eTwinning Schools: Leading, Learning, Sharing

Rome, May 14-16 2018

#eTwSchools18

The eTwinning School

Donatella Nucci



AGENZIA
NAZIONALE
INDIRE



INDIRE ISTITUTO
NAZIONALE
DOCUMENTAZIONE
INNOVAZIONE
RICERCA EDUCATIVA

Con il patrocinio di:



The eTwinning school recognition



Introduced in
2017 and
awarded for the
first time in
2018

Recognitions in eTwinning
have existed since
the beginning of
the Action but...



Recognitions in eTwinning



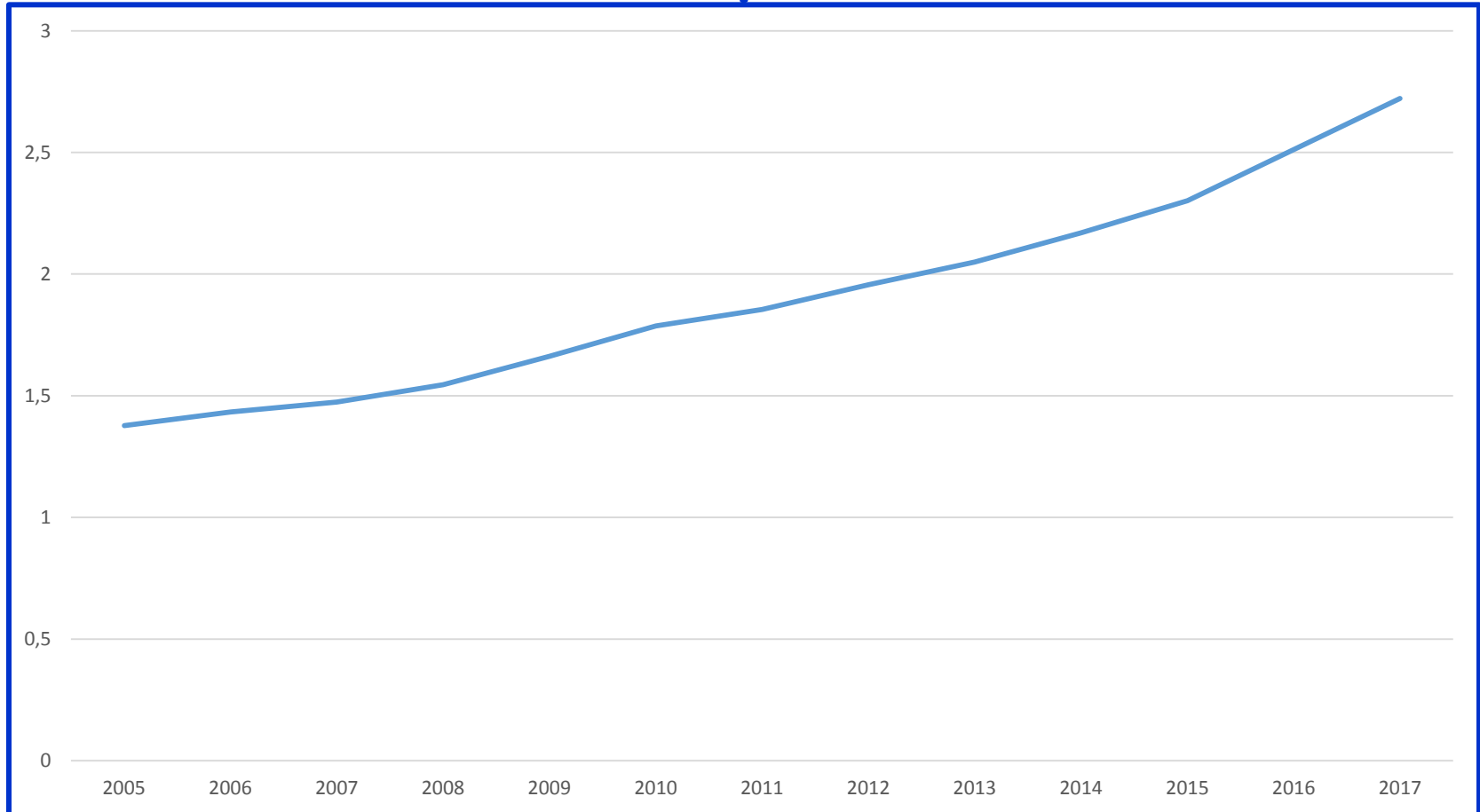
The focus in the past was on the work of the individual teacher

The past

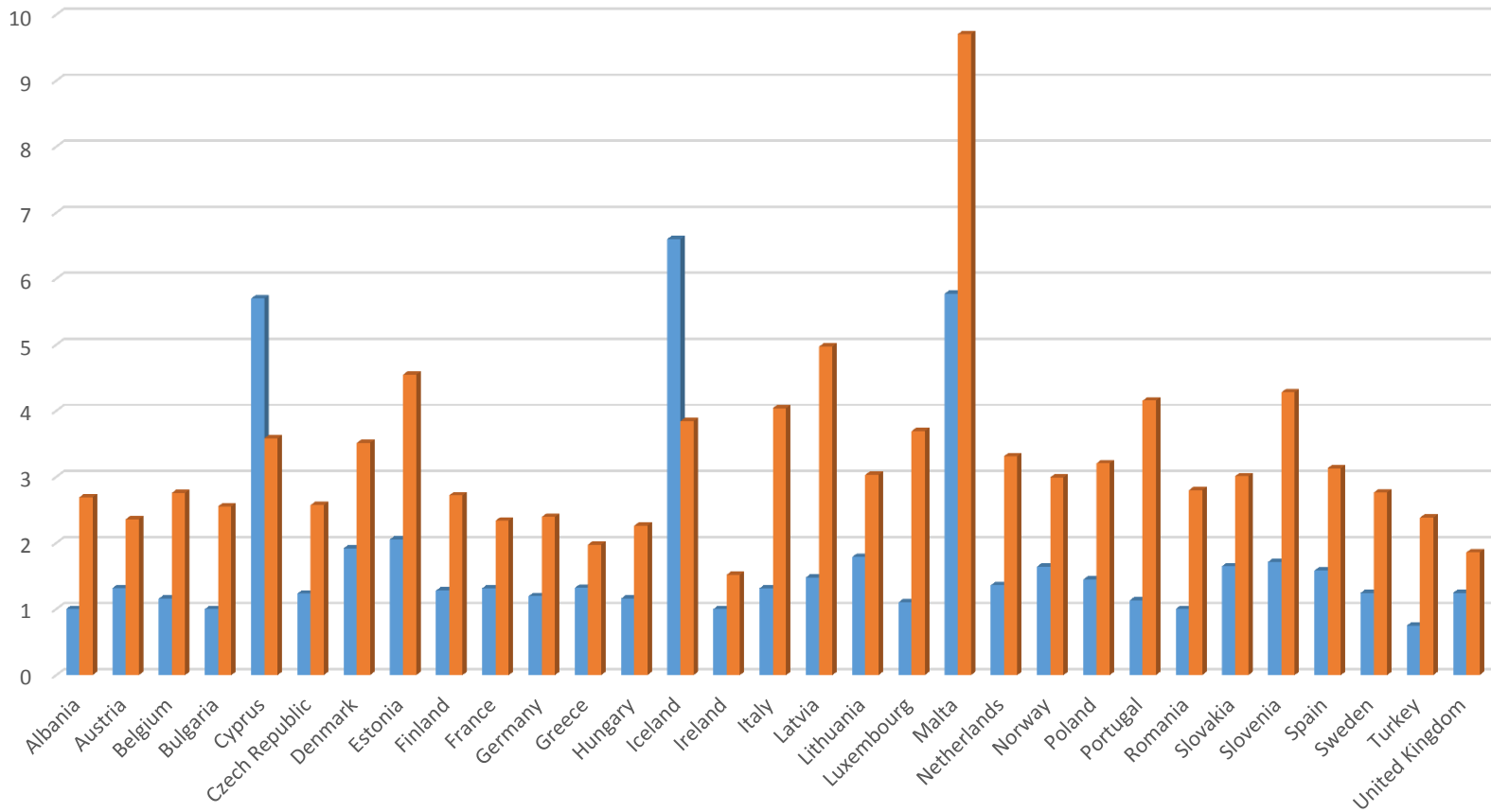


eTwinning was more an experience of the individual teacher in his/her school

Participation in eTwinning Teachers per school



Number Teachers /Schools 2005 and 2017

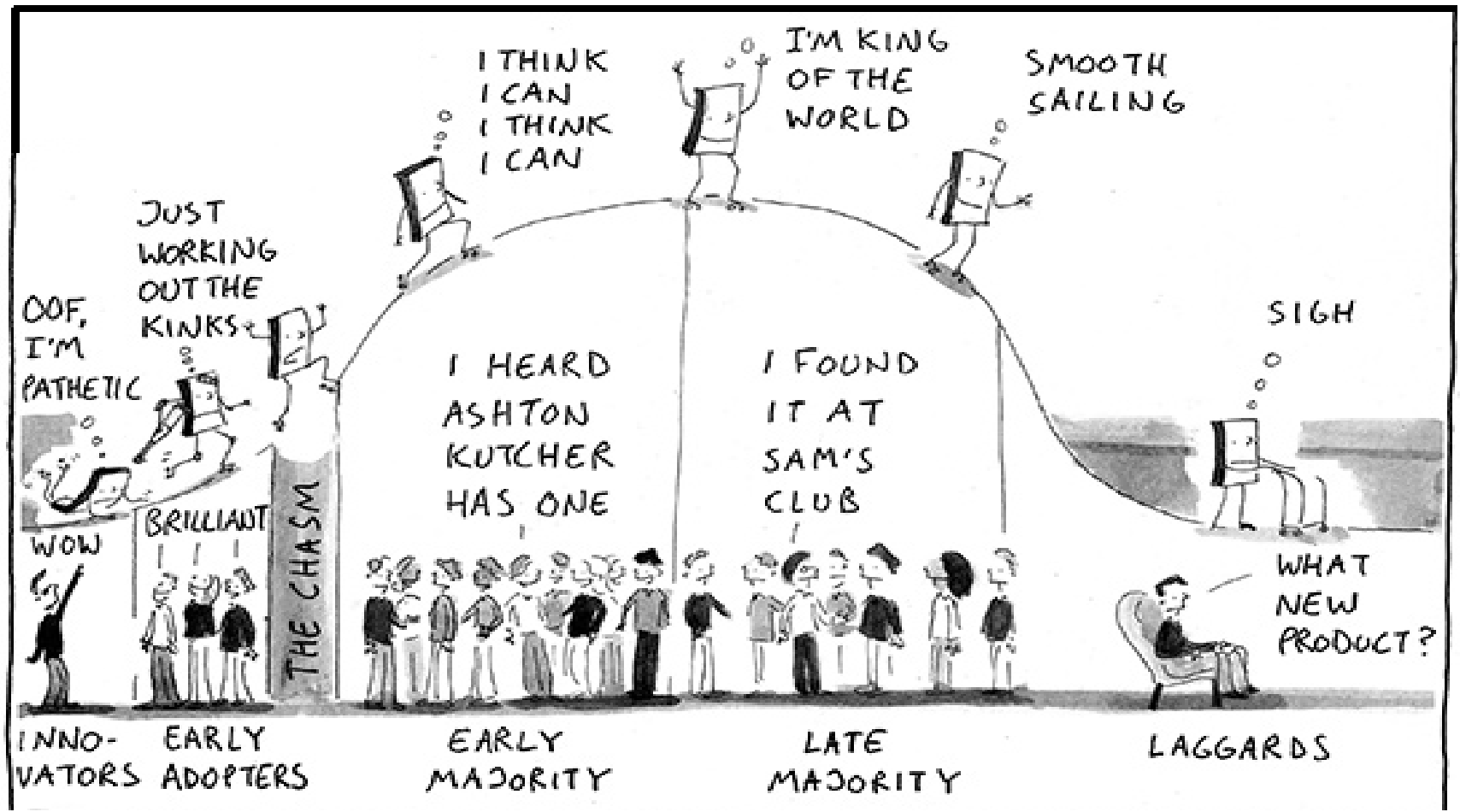


Diffusion of innovation



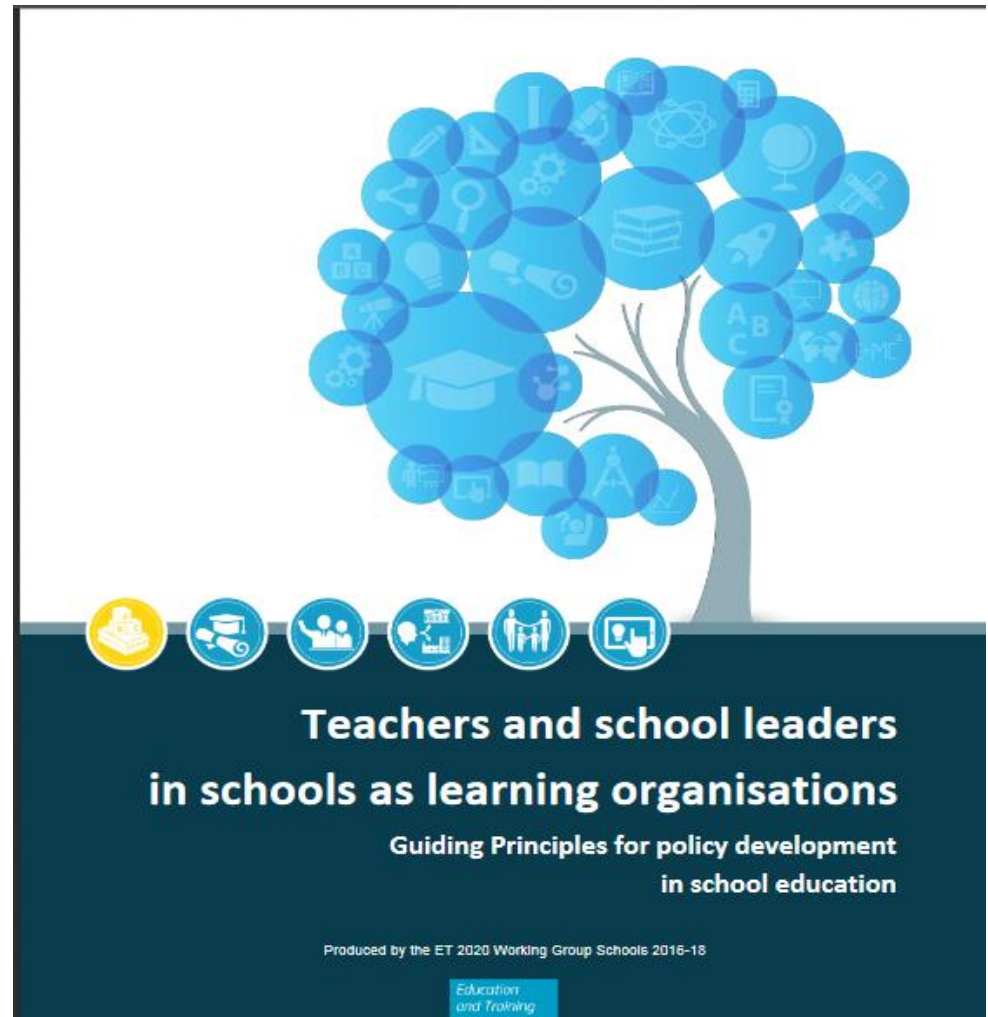
Innovation needs to spread in order to affect the system

Diffusion of innovation theory



ET2020
School Education

Schools as Learning Organisations



Educating change agents Teacher competences in an era of change

Marco Snoek, Amsterdam Institute of Education

The importance of managing change is emphasized in many publications on school development and leadership.

*While in many schools it is difficult to get support from teachers for development or **curriculum innovation projects**, professional development programmes that are aimed at school leaders pay attention to competences that are related to **managing and implementing change**.*

***Change competences are seen as an essential part of educational leadership.** However, by regarding himself or herself as responsible for the change process in school, the school leader might hinder and frustrate the teachers and their involvement in the innovation process.*

This can be illustrated by comparing the relation between the teacher and the school leader with that between the pupil and the teacher [...]

Educating change agents Teacher competences in an era of change

Marco Snoek, Amsterdam Institute of Education

When school leaders experience a **lack of ownership of teachers in innovation processes**, they increase their steering measures in the change process.

As a result, the ownership and involvement of teachers is further reduced, and the school leaders increase their steering activities even more.

The eTwinning school label



Given to schools in which

- eTwinning has gone beyond the effort of the individual teacher
- Pedagogical innovation has been introduced through project based learning as demonstrated by the attainment of a Quality Label
- Teachers work together and peer learning is taking place
- Teachers are involved in professional Development activities
- Teachers work in collaboration with the Head of the school
- There is a clear policy on the Safe use of Internet

Schools on their way to become Learning Organisations

Procedures for requesting the label

Phase one Carried out entirely by the system through a query in the DB

Phase two It involves filling an application

eTwinning school label criteria

Phase 1

- The school has been registered on eTwinning for more than two years
- There are at least two active eTwinning teachers linked to the school at the time of the application.
- There is a European eTwinning project with a National Quality Label (within the last two years from application date).

eTwinning school label criteria

Phase Two

- **Criteria D.**
- **Criteria E.**
- **Criteria F.** The school must demonstrate that two or more staff members or groups of staff have taken part in eTwinning promotional activity, has taken place within the school or in the local community in the year of the award their contribution to the strategic development of the school

eTwinning school label criteria

Phase Two

- **Criteria A.** The school must demonstrate activities that prove teachers'/pupils' awareness of **responsible use of the internet**
- **Criteria B.** The school must demonstrate that there is **active collaboration** between a group of three or more teachers in eTwinning activities
- **Criteria C.** The school must demonstrate that at least two groups of **pupils** in the school are involved in eTwinning projects
- **Criteria D.** The school must demonstrate that two active eTwinning teachers from the school have participated in one or more eTwinning **educational events** and their contribution to the strategic development of the school
- **Criteria E.** The school must **publically show** its involvement in eTwinning.
- **Criteria F.** The school must demonstrate that an eTwinning **promotional activity** has taken place within the school or in the local community in the year of the award

Application form introduction

[DOWNLOAD FORM](#)

ETWINNING SCHOOL APPLICATION

- 1 **Introduction**
- 1.1 **Section 1.1**
+ [Feedback]
- 1.2 **Section 1.2**
+ [Feedback]
- 2 **Section 2**
- 3 **Section 3**
- 4 **Section 4**
- P **Preview**
- F **Finish**

eTwinning School application

Thank you for your interest in applying for the eTwinning School Label. The form you are about to fill in covers the 6 criteria for the eTwinning School Label grouped into the following 4 areas

1. eTwinning and its contribution to developing eSafety awareness in the school
2. eTwinning and its contribution to the teaching and learning practices, interdisciplinary teaching and project work
3. eTwinning and its contribution as an active and strategic professional development tool for teachers and other school actors
4. eTwinning and its contribution to the strategic development of the school

In some of the questions you are asked to provide supplementary evidence to the answers you have chosen. In other questions some of the information is pre filled in from the eTwinning database and you may add further information as required.

Nota Bene:

The form **does not** have to be completed in one session and may be saved in draft form. **Click on the submit button, once you have completed the form.**

When you are ready to make your final submission please ensure that the **school principal or a member of senior management** has signed the declaration of honour. The final submission cannot be made without this.

Please note that you must fulfil **all the requirements for section 1** in order to obtain the eTwinning School Label.

Once the final submission has been made you will get an immediate feedback as to the status of your application. If you are unsuccessful, you will receive a report of the areas you need to work on in order to be successful. You have until **_date1** to resubmit your form with additional information in the areas you need to complete. As before, the school principal or a member of senior management will have to certify the accuracy of the information submitted.

The list of successful eTwinning Schools **_period** will be published in **_date2**.

IT IS STRONGLY ADVISED THAT, BEFORE YOU BEGIN TO FILL IN THE FORM, THE eTWINNING TEACHERS IN THE SCHOOL MEET TOGETHER WITH THE SCHOOL PRINCIPAL AND DISCUSS HOW TO GATHER AND PRESENT THE INFORMATION REQUIRED.

NEXT

Section 1: eTwinning and its contribution to developing eSafety awareness in the School

Criteria A. The school must demonstrate activities that prove teachers'/pupils awareness of responsible use of the internet

1.1. eSafety Policy

1. Are eSafety issues referred to in school policies (e.g. behaviour, anti-bullying, child protection)?

- Yes, eSafety is an integral part of several school policies
- Some policies refer to eSafety
- No

2. Does the school have a policy on the use of mobile devices/mobile phones?

- Yes we have a policy for students/we follow Ministry directives
- We sometimes use mobile phones as a pedagogical tool, but do not have a specific policy on their use at school
- No

3. Does your school policy contain a section on the taking and publishing of photographs of, and by, pupils, parents and staff?

- Yes, we have a comprehensive section on this in our School Policy/ We follow ministry directives
- Yes, but it has not been reviewed for some time
- No

eSafety in Practice

4. Is eSafety taught as part of the curriculum?

- Yes, it is embedded in various subjects
- Yes in the ICT / Personal Social and Health curricula
- Not officially - it is up to individual teachers
- Not at all

5. Does the school provide eSafety information for parents?

- Yes regularly
- Yes when asked
- No

eSafety in Practice

6. Do all staff receive regular training on eSafety issues?

- Yes, all staff receive regular training in online safety issues
- Yes some staff occasionally/sometimes receive training
- The staff do not receive training

7. Does your school celebrate 'Safer Internet Day' (SID)?

- Yes, the whole school celebrates 'SID'.
- Yes, some staff and pupils celebrate 'SID'
- Not at the moment

Section 2 eTwinning and its contribution to the teaching and learning practices, interdisciplinary teaching and project work

Criteria B. The school must demonstrate that there is an active collaboration between a group (3 or more) of teachers in eTwinning activities

Criteria C. The school must demonstrate that at least 2 groups of pupils in the school are involved in eTwinning project/projects

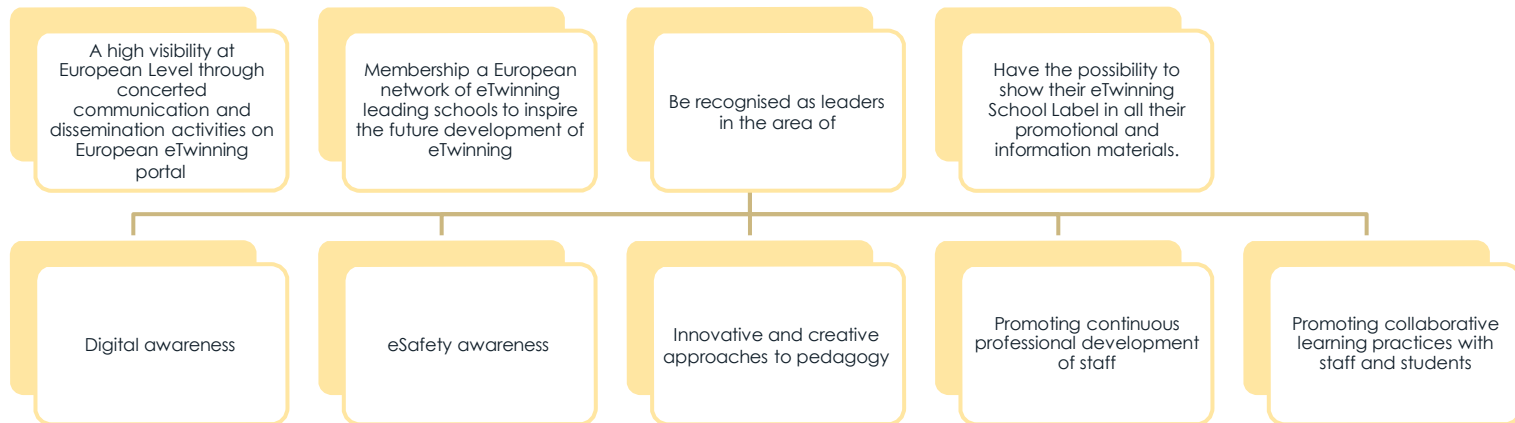
Section 3: eTwinning and its contribution to an active and strategic professional development tool for teachers and other school actors

Criteria D. The school must demonstrate that two active eTwinning teachers from the school must have participated in one or more eTwinning educational events

Section 4: eTwinning and its contribution to the strategic development of the school

Criteria E. The school must publically show its involvement in eTwinning, for example, By displaying the eTwinning logo and/or a description of their eTwinning activities on the school website or evidence from a school publicity /policy document or brochure where eTwinning activities are referred to.

WHAT ARE THE BENEFITS OF BEING AN eTWINNING SCHOOL?



What will eTwinning school receive?

The huge satisfaction of being recognised as one of the leading schools in Europe !



Thanks for the attention!

Donatella Nucci
d.nucci@indire.it